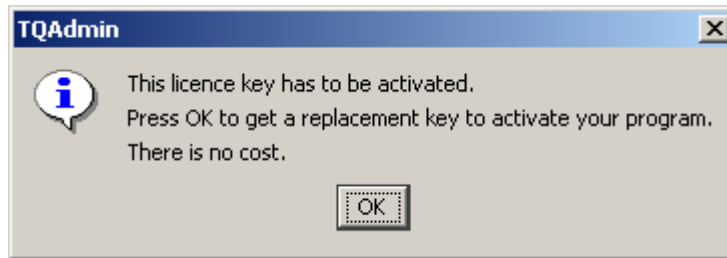


Replacing an expired TYPEQUICK licence key with Internet access

For security purposes, Typequick's products are protected by the use of licence keys. For the full TYPEQUICK product to be available, a licence key must be entered into the Typequick database and then activated. The following instructions will help you to activate the full TYPEQUICK product.

Having entered a licence key into the TYPEQUICK program, a message may appear saying the licence key has expired and needs to be activated.



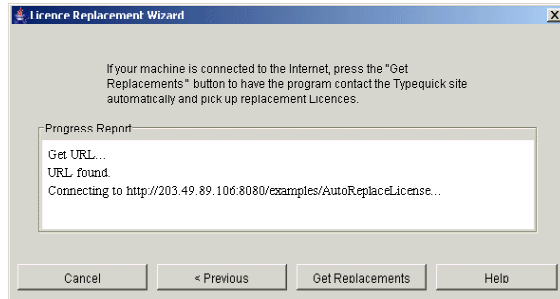
Press "OK" to begin the process...

A box will appear...



Typequick Pty Limited - 12/33 Ryde Rd Pymble 2073 NSW Australia
Tel: +61 (0)2 8467 9777 Email: typequick@typequick.com.au
www.typequick.com.au

1. Click on the radio button next to "Automatic update" and click "Next".
2. Ensure you are connected to the internet.



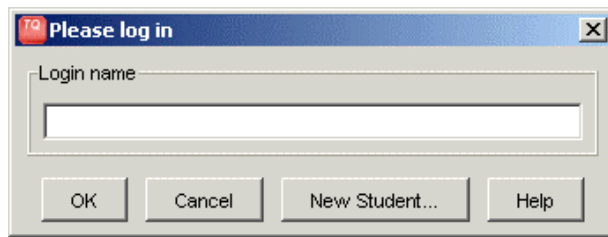
3. Click "Get Replacement" button.
4. Follow the login process described below.

This is an automated activity - The replaced licence key will automatically be added to the program's database and the user will be prompted to Login. You will not have to re-enter a licence key. There is no need to know or record the newly replaced licence key, it will be contained with the database.

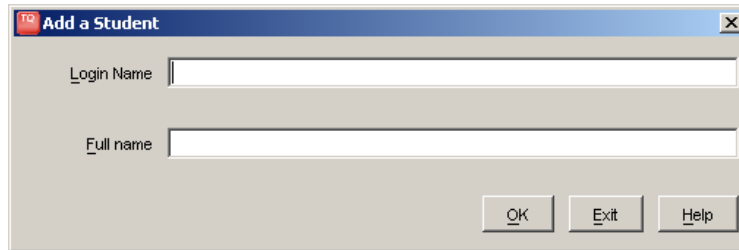
Keep your original licence key for future technical assistance.

Login

A **Login** dialog box will appear, Click "New Student"



A second **Login** dialog box will appear:



1. Enter the **Login Name** you want to use each time you use the program. This should be one you will remember (It is NOT case sensitive.)
2. Enter your **Full Name** for reporting purposes
3. Click "OK"
4. Your Login Name should appear in the login box.
5. Click "OK" to login

The **Main Menu** will appear. Click "Start Course" to begin the course.